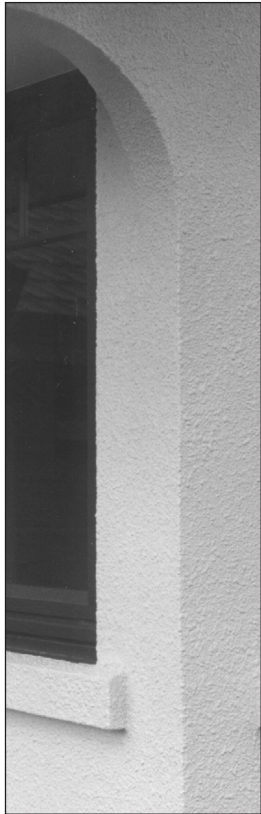




Corner Highlights (Pilasters)



Preplastered Polystyrene Architectural Corner Highlights

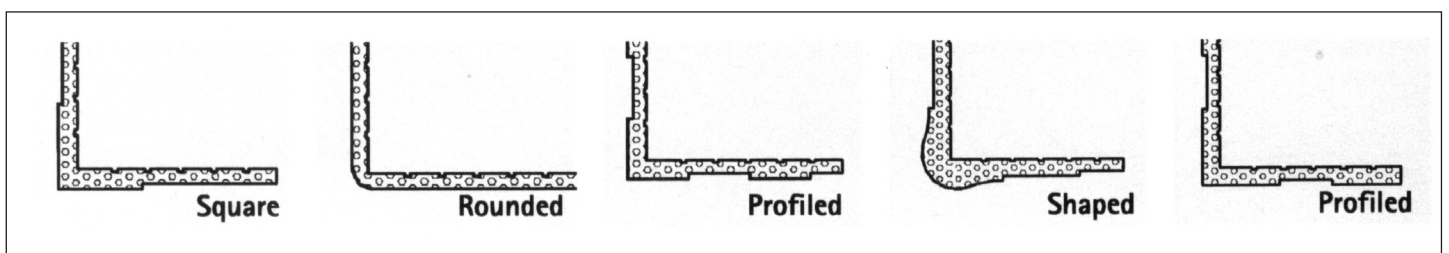
Fabricated from polystyrene with strong fibreglass re-inforcing mesh and varying coats of plaster for impact resistance.

Corner highlights are available in a range of sizes, shapes and lengths.

Hitex provides a standard range ex factory and longer lengths up to 4.5m are also available to order.

For corner highlights longer than 4.5m taper ends need to be specified for jointing. Highlights are available to fit to 40mm, 46mm vented and cavity and 60mm Hitex Plasterline systems.

The bases of corner highlights can be either an integral part of a system or attached after plastering is complete and they are readily textured or painted after installation. An extra layer of re-inforcing mesh is available where greater impact resistance is required.



How to Install

- Ensure that the correct thickness of highlight is ordered to match your Hitex system sheet.
- Before fixing the Hitex sheets, measure the required length of highlight and trim accordingly.
- Place the corner in position against the frame and fasten with nails into the nogs.
- When fixing the Hitex sheets, simply butt up to the corner highlight and fasten both edges vertically using Hitex Read.
- Your plasterer will tape and fair the joint before adding the finishing plaster.
- When adding a highlight to a completed corner, use a 20mm moulding. Simply measure to length and attach with Hitex GRIP adhesive.